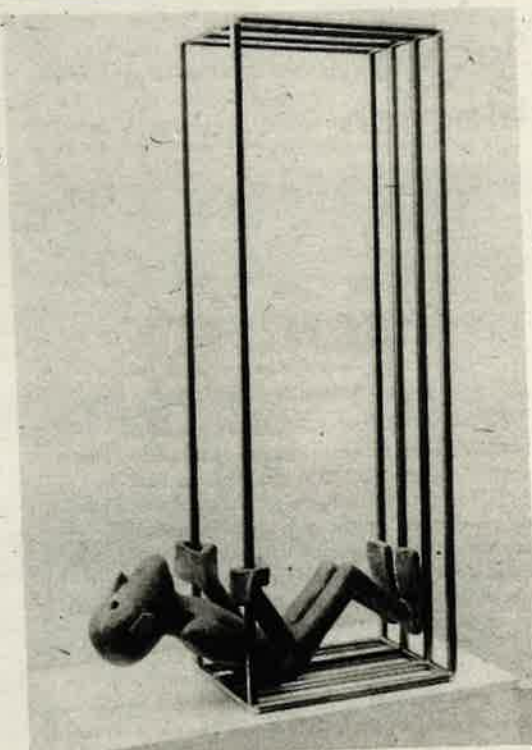


ARTS CRAFTS GALLERIES



Jerry Atkins' Figure on Back with Bars, 49" high, 24" wide, 13" deep. Steel and bronze.

in Woodstock and Greenwich Village. At his current show at the Kraushaar Galleries, 1055 Madison Avenue, his third one-man show in New York in four years, Atkins shows fourteen elemental figurative pieces, nine ceramic and five bronze. They move from the whimsical to Atkins' unique brand of eccentric, dramatic mockery and share a special vision of existential predicament.

For this viewer, the most striking of the ceramic pieces is the wall-mounted Crucifixion — Two Figures (a baby hangs by the tongue of a Christ-like figure). It is not for the faint-of-heart. Almost

as powerful is Crucifixion — One Figure, eloquent in its simplicity. In contrast, there's the delightful Man Seated, Leaning Back, a ceramic representation of Atkins himself in his favorite position — stretched out on a hand-made wooden chair (another Atkins trademark).

In this show, Atkins ventures for the first time into cast metal and offers five pieces in bronze. Particularly exciting is Seated Figure with Bars — a clenched-fisted man struggling within a steel cage (also made by Atkins). The metaphysical tension and contrast of materials (bronze and tubular steel) create a stunning effect. This and two other cage pieces seem to pose an unsurmountable dilemma and mock themselves at the same time. Figure on Back with Bars is also noteworthy.

To execute his bronzes, Atkins spent all of last summer in Woodstock, commuting regularly to Phoenicia Forge to study casting techniques. Coryat Casting in Rhinebeck did rough casting for the figures. David Brown of Saugerties (formerly of the Modern Art Foundry in Long Island City) did the molds and finishing. The trips were obviously worth the effort.

All of Atkins' work has evolved and grown from earlier pieces seen at the Roko and Art Latitudes Galleries in New York. These new works are more complex and adventurous than anything he has previously done. They reach out to test new limits — and succeed. Atkins is a sculptor of great promise, who continues to explore and capture a very personal vision. The show closes April 11th. ++

Florence Isaacs

the Performing Arts of Woodstock's
Playwright Unit
presents
An original play

RETURN TO THE RIVER

by
CHARLES DUMAS

directed by
DAVID KROSS

Woodstock Town Hall

FRIDAY • SATURDAY & SUNDAY
APRIL 10, 11, 12 & 24, 25, 26

Curtain 8 PM

ZEN MEDITATION

PEOPLE

Photography

23
VEIL
Connor
sors"

d. & Thurs.
raphy Classes

679-9957